

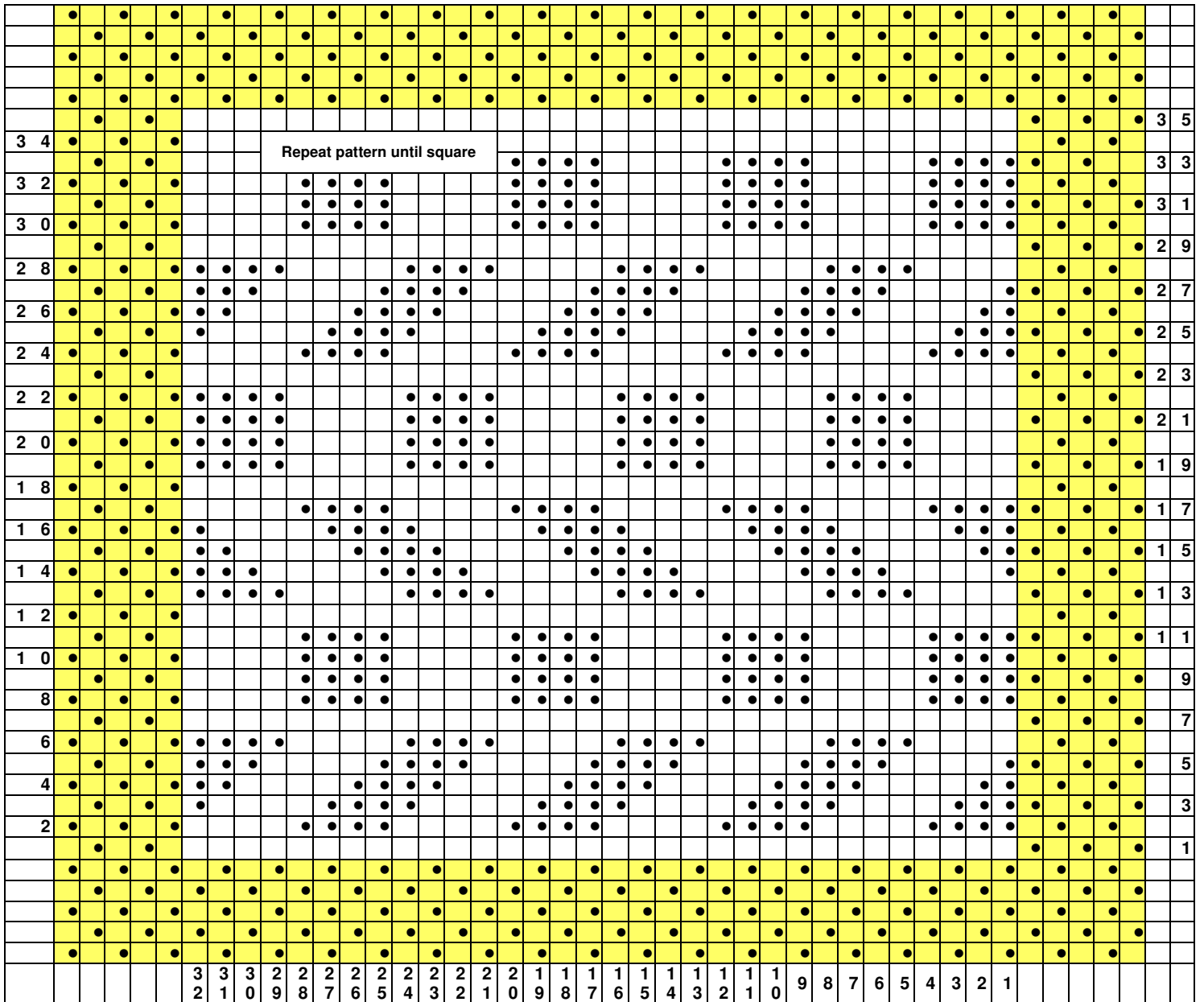
Pattern is a multiple of 8
 Cast on 42 (32 for pattern + 10 for selvedge)

Seed Stitch Selvedge, 5 stitches on each side

Chart Symbols

□ RS: Knit
 WS: Purl

• RS: Purl
 WS: Knit



INTERMEDIATE: UNUSUAL PATTERN CHECK

Cast on 42 stitches

Border Rows: Repeat rows 1 and 2 for five rows (row 1, row 2, row 1, row 2, row 1)

Row 1: K1, P1 across row

Row 2: P1, K1 across row

Pattern:

Row 1: (K1, P1, K1, P1, K1) Knit across to last 5 stitches (K1, P1, K1, P1, K1)

Row 2: (K1, P1, K1, P1, K1) *K4, P4 repeat from * across to last 5 stitches (K1, P1, K1, P1, K1)

Row 3: (K1, P1, K1, P1, K1) P1 *K4, P4 repeat from * across to last 12 stitches K4, P3 (K1, P1, K1, P1, K1)

Row 4: (K1, P1, K1, P1, K1) K2 *P4, K4 repeat from * across to last 11 stitches K4, P2 (K1, P1, K1, P1, K1)

Row 5: (K1, P1, K1, P1, K1) P3 *K4, P4 repeat from * across to last 10 stitches K4, P1 (K1, P1, K1, P1, K1)

Row 6: (K1, P1, K1, P1, K1) *P4, K4 repeat from * across to last 5 stitches (K1, P1, K1, P1, K1)

Row 7: (K1, P1, K1, P1, K1) Knit to last 5 stitches (K1, P1, K1, P1, K1)

Row 8, 9, 10, 11: (K1, P1, K1, P1, K1) *K4, P4 repeat from * across to last 5 stitches (K1, P1, K1, P1, K1)

Row 12: (K1, P1, K1, P1, K1) Purl to last 5 stitches (K1, P1, K1, P1, K1)

Row 13: Repeat Row 6

Row 14: (K1, P1, K1, P1, K1) K1 *P4, K4 repeat from * to last 12 stitches P4, K3 (K1, P1, K1, P1, K1)

Row 15: (K1, P1, K1, P1, K1) P2 *K4, P4 repeat from * to last 11 stitches K4, P2 (K1, P1, K1, P1, K1)

Row 16: (K1, P1, K1, P1, K1) K3 *P4, K4 repeat from * to last 10 stitches P4, K1 (K1, P1, K1, P1, K1)

Row 17: Repeat row 2

Row 18: Repeat row 12

Row 19, 20, 21, 22: (K1, P1, K1, P1, K1) *P4, K4 repeat from * to last 5 stitches (K1, P1, K1, P1, K1)

Repeat rows 1-22 until square measures approx 9 inches from cast on edge, ending with either row 7 or 18.

Repeat border rows as above

Bind off (loosely so edge is not too tight)