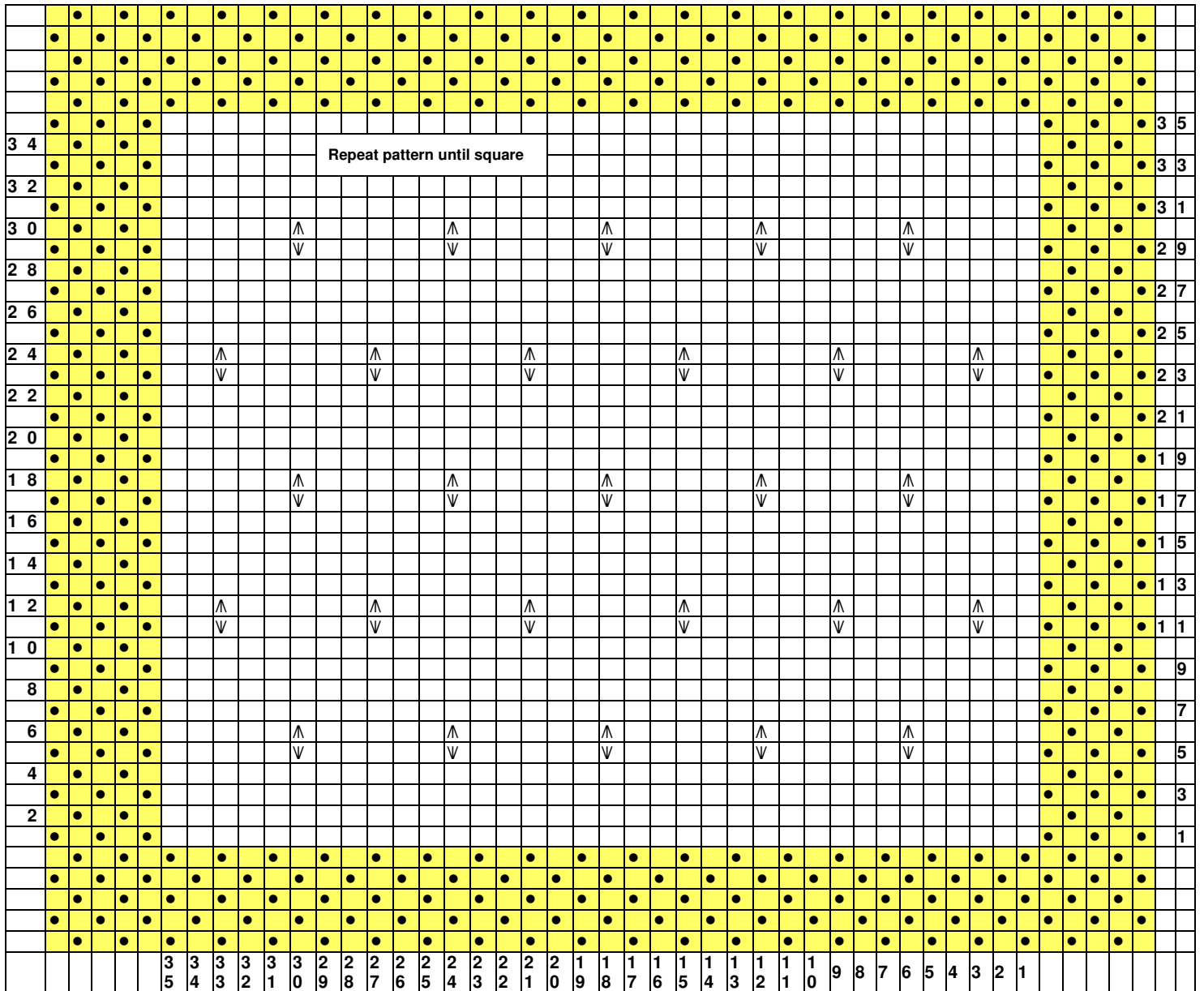


Pattern is a multiple of 6 + 5
 Cast on 45 (35 for pattern + 10 for selvedge)

Seed Stitch Selvedge, 5 stitches on each side

Chart Symbols

- ◻ RS: Knit ● RS: Purl
- ◻ WS: Knit ● WS: Purl
- ∇ K1,P1,K1,P1
- ∧ Slip 3, K1, Pass 3 over knit stitch



Spaced Knots



Note: Don't count your stitches after row 5 or 11, they won't match your cast on number!

Cast on 45 stitches Border rows 1-5: K1, P1 across

Pattern rows:

Row 1, 3: (K1, P1, K1, P1, K1) knit to last 5 sts (K1, P1, K1, P1, K1)

Row 2, 4: (K1, P1, K1, P1, K1) purl to last 5 sts (K1, P1, K1, P1, K1)

Row 5: (K1, P1, K1, P1, K1) K5, * (K1 into the front of the stitch, without dropping the yarn off the needle K1 into the back of the same stitch) two times (making 4 total stitches out of 1), K5 repeat from * to last 5 stitches (K1, P1, K1, P1, K1) {Refer to steps 2 and 3 in the Bobble Tutorial above}

Row 6: (K1, P1, K1, P1, K1) P5 *slip the next 3 stitches, move yarn to the back K1, pass the 3 slipped stitches, one at a time, over the last knit stitch (knot completed), P5 repeat from * to last 5 sts (K1, P1, K1, P1, K1)

Row 7, 9: Repeat Pattern Row 1

Row 11: (K1, P1, K1, P1, K1) K2, * (K1 into the front of the stitch, without dropping the yarn off the needle K1 into the back of the same stitch) two times (making 4 total stitches out of 1), K5 repeat from * ending with a K2 (K1, P1, K1, P1, K1)